

# IDOT PHASE II INTERSTATE ENGINEERING I-90 BRIDGES, INBOUND, AND REVERSIBLES REGION 1 / DISTRICT 1

**CLIENT:**  
Graef USA, Inc.

**CONTACT:**  
Peter Johnson  
(773)399-5443

**CONTRACT:**  
Illinois Department of Transportation  
PTB 195/ Item 10/ Work Order 3

**PROJECT PURPOSE:**

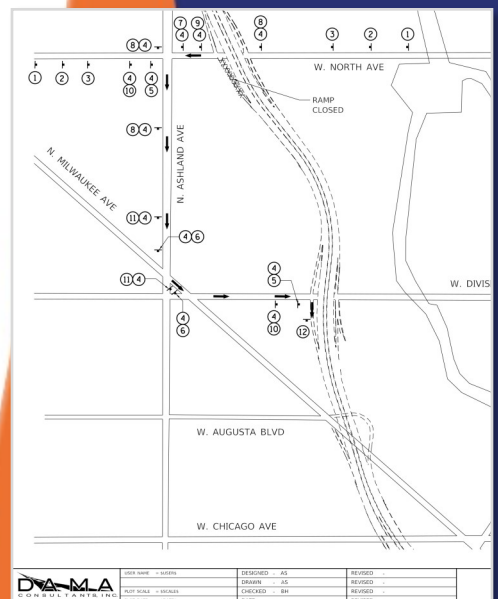
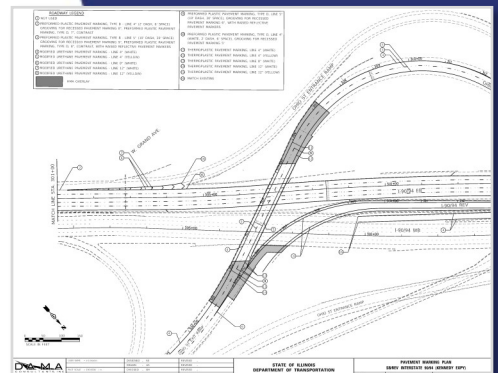
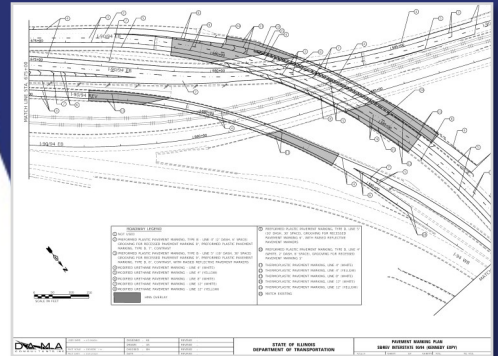
- Prepare Contract Plans for Construction Bid Packages Including Roadway Details, Patching Details, Maintenance of Traffic and Detour Plans, Agency Coordination, and Interfaces with Other Roadways
- Develop Existing and Proposed Typical Sections
- Develop Concept Staging Plan, Detour Signage Plan, Specifications, and Special Provisions
- Estimate Costs for Construction Bid Packages

DAMA worked with Graef on IDOT task orders along the Kennedy Expressway/I-90 in Cook County. These task orders included the assessment of roadway surface conditions, the development of Maintenance of Traffic (MOT) detour and signage plans, the development of concept staging plans and roadway plans.

The scope of Work Order 3 covered 26 bridges on 7 route miles of the expressway's Inbound and Reversible lanes. This section extended from Ohio St. to the Kennedy/Edens Expressway junction and included portions of right-of-way shared with CTA Blue Line tracks and stations.

DAMA developed typical sections, Maintenance of Traffic (MOT) plans across three project stages, 21 MOT detour plan sheets, concept staging plans, and roadway plans including interfaces between bridge improvements and the existing roadways. DAMA staff also developed pavement marking plans for HMA overlay and patching work.

DAMA used the IDOT District 1 Spec Assembler tool to create and incorporate Special Provisions for project segments.



DAMA CONSULTANTS, INC.	DESIGNED	AS	REVISION	
	DRAWN	AS	REVISION	
	CHECKED	BY	REVISION	
	DATE		REVISION	